

CONNECT TO SNOWFLAKE IN ALTERYX DESIGNER

- **PRE-REQUISITES:**

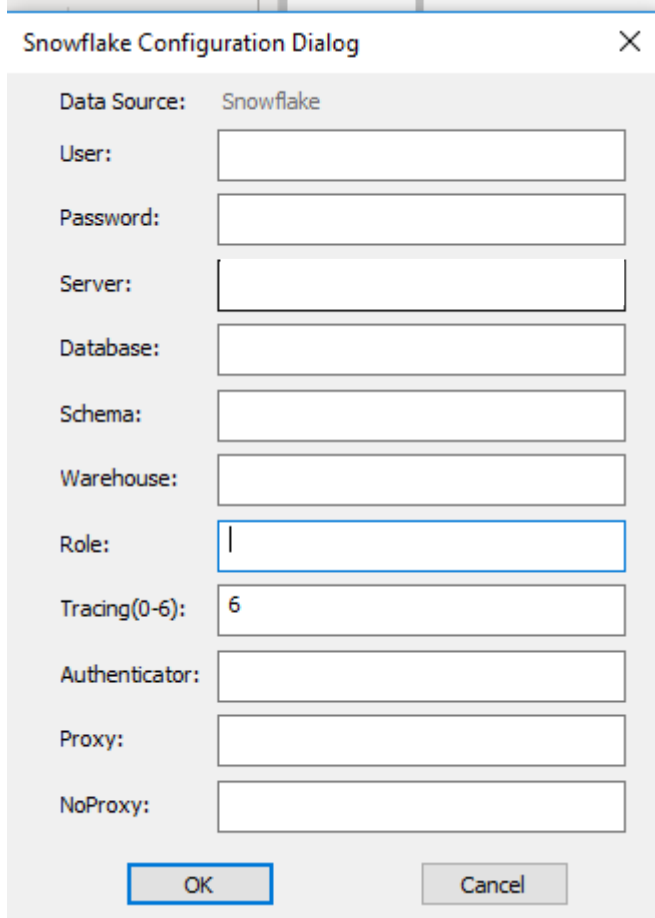
Download and install the snowflake ODBC driver from the link below:

<https://docs.snowflake.net/manuals/user-guide/odbc-download.html>

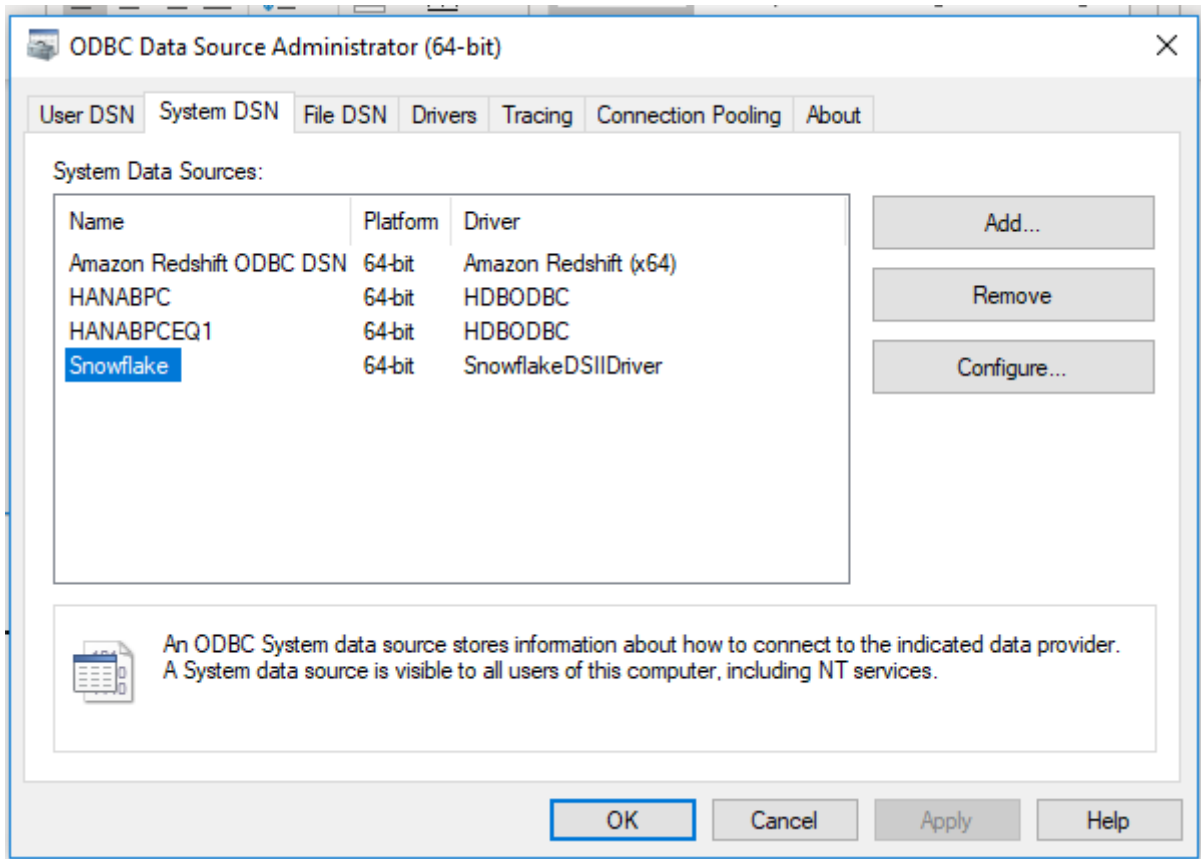
1. **CONFIGURE ODBC DRIVER**

After the ODBC driver is installed, configure the ODBC driver in Windows environment. Refer to the steps and screenshot from the link below:

<https://docs.snowflake.net/manuals/user-guide/odbc-windows.html>

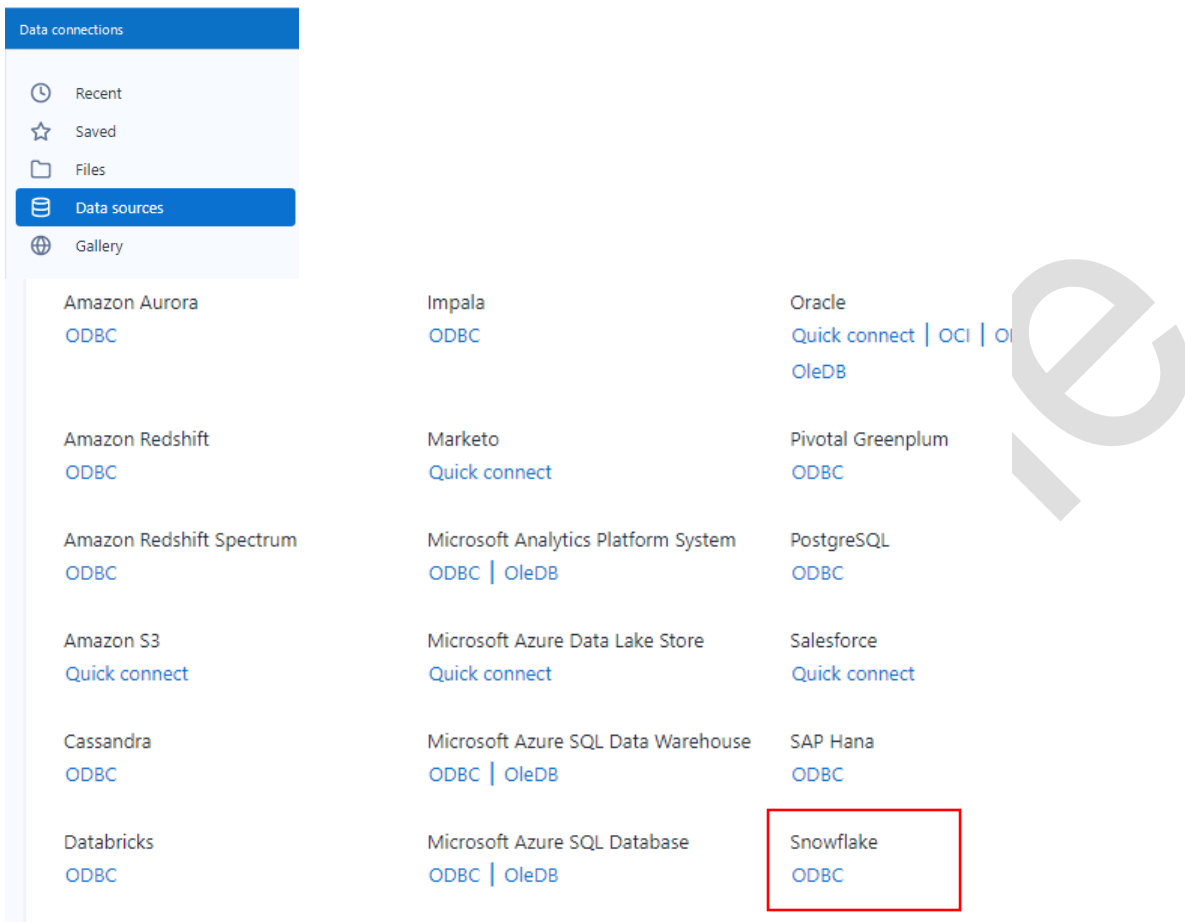


Screenshot of the Snowflake Configuration Dialog box. The dialog has a title bar "Snowflake Configuration Dialog" and a close button. It contains several input fields: "Data Source" (Snowflake), "User", "Password", "Server", "Database", "Schema", "Warehouse", "Role" (with a cursor), "Tracing(0-6)" (6), "Authenticator", "Proxy", and "NoProxy". At the bottom are "OK" and "Cancel" buttons.

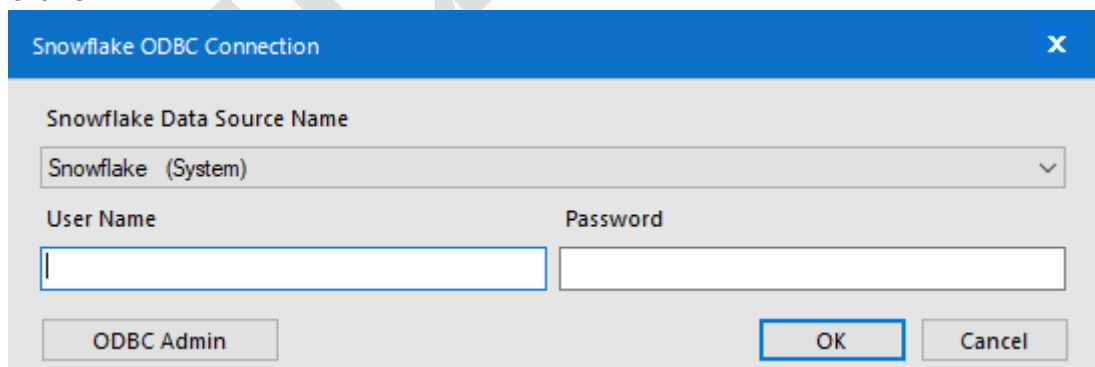


2. CONNECT TO SNOWFLAKE IN ALTERYX DESIGNER

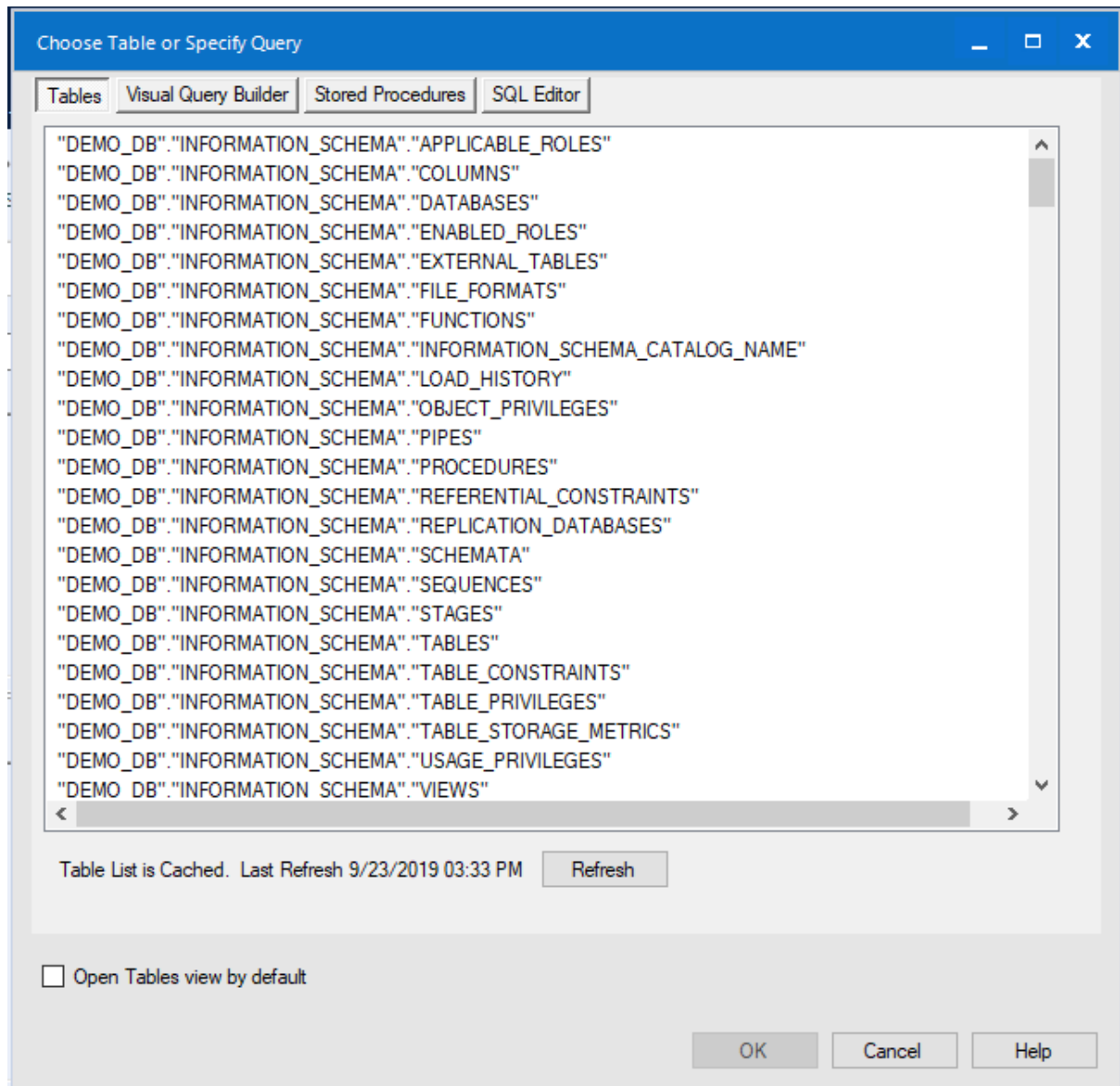
a) In Alteryx design input tool / output tool, click Data Sources -> Snowflake ODBC



b) Select the Snowflake DSN, enter the user name and password to connect to Snowflake. Click OK



c) Select the table to connect, then click OK.



d) Click Run to test the connection and check the result.